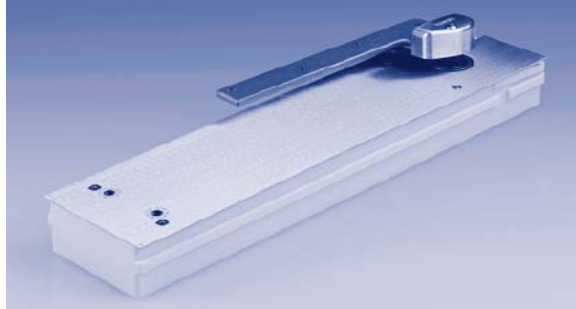


FLOOR CLOSER CROSS-REFERENCE



Rixson	Dorma
Center Hung Single Acting	
28	N/A
H28	N/A
5010	BTS80G/H
	G/H is center hung single acting
Center Hung Double Acting	
30	N/A
40	N/A
H40	N/A
5020	BTS80A/B
	A/B us double acting
Independently Hung & Pocket Doors	
327	N/A
5310	BTS80P
5300	BTS80I
	I is Independently Hung/P is for Pocket Installation
Offset Hung	
20	N/A
27	N/A
L27	N/A
F27	N/A
5100	BTS80D/E
F5100	BTS80F
	D/E is offset hung, L is wider spacing for a lead lined door, F is for a fire door